



SMT

Tower Talk

Summer 2016



Summer

In This Issue:

- *SMT Art Gallery Exhibitions*
- *Building Management Update*
- *Conference Room Rules*
- *Q1 2016 Work Order Results*
- *Tips from Security*
- *Recovery Room Policy*
- *SMT's Blood Drive Updates*
- *Retail Coupons*



CBRE

June

14,15

SMT Blood Drive

29

SMT Blood
 Pressure
 Screening

July

4

Independence
 Day

27

SMT Blood
 Pressure
 Screening

August

9,10

SMT Blood Drive

31

SMT Blood
 Pressure
 Screening

September

Sept 3-5

Labor Day
 Weekend

SMT Art Gallery – Cultural Perspectives, Part 1 and Part 2

Cultural Perspectives, Part 1

Seattle Municipal Tower Gallery

April 5 – June 29, 2016

Cultural Perspectives, Part 2

Seattle Municipal Tower Gallery

July 1 – September 30, 2016



Kabuki Rehearsal by Roger Shimomura.

Cultural Perspectives, Part 1 and Part 2 feature Seattle Public Utilities recent artwork purchases for their Portable Works collection. Much of the artwork relates to the experience and social concerns from communities of color. Three separate exhibitions will feature 66 recently purchased artworks from 45 artists.

Reception for the artists:

Thursday, August 4th, 4 – 6 p.m.

Level 3 Seattle Municipal Tower Art Gallery

Seattle Presents Gallery – Dialogue in Art: Exhibitions on Racial Injustice

A yearlong series of exhibitions that explore artists' and curators' interpretations of racial injustice and systemic racism impacting Black and African-American people throughout America. The exhibitions will showcase and uplift the voices of underinvested and marginalized communities while creating a safe space for dialogue.

Mark Mitchell/ Casket Pall Residency

Seattle Presents Gallery

May 16 – July 15, 2016

Mark Mitchell's residency will feature work on a hand sewn casket pall that subverts the flag placed on the caskets of American heroes, and honors the lives lost because of our shared history of slavery and racism.



The Choking Kind (White Wash) 2015, Neddy at Cornish Exhibition, Cornish College of the Arts

Shaun Scott

Seattle Presents Gallery

July 18 – September 9, 2016

Shaun Scott will invite various thought-leaders to participate in curated conversations in the Seattle Presents gallery that he will audio record and then turn into podcasts. The podcasts will be made accessible on the Office of Arts & Culture's website.

SMT Ethnic Heritage Art Gallery Exhibition – presents artist Brenetta Ward
July 12 – October 14, 2016

Brenetta Ward is a fiber artist who enjoys combining traditional quilting techniques and ethnic fabrics to create simple, elegant designs. She uses fabric the way a writer might use words on a page. Her design wall is her page and her fabrics are her words. Ward transform shapes, colors and patterns into visual images that communicate feelings, moods and emotions. She finds inspiration for her designs from people she cares about, scenes in nature and encounters of faith.

Her quilted pieces celebrate life — the joys, triumphs, memories and sorrows of everyday living. Using cultural textiles, vintage photographs and symbolic embellishments, She creates narrative quilts that tell personal stories and designs contemporary quilts and functional fiber art that nurtures our spiritual needs for creativity, beauty and comfort.

Reception for the artist:

July 21, Noon – 1 pm and 4 pm – 6 pm

Level 3 Seattle Municipal Tower Ethnic Heritage Art Gallery

Detail - The Women Before Me, 2000

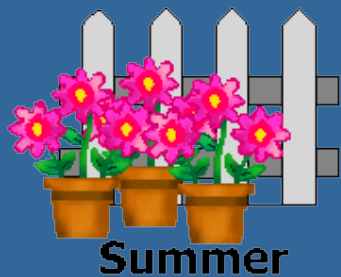
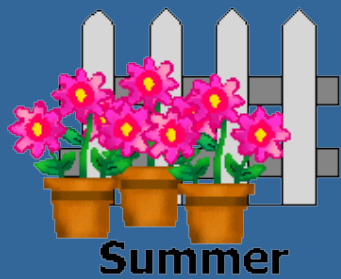
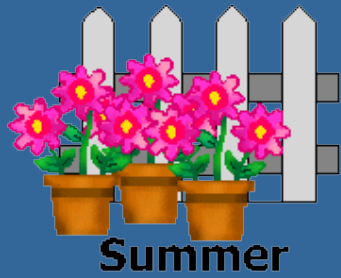
Brenetta Ward

Fiber art

52" x 29"



Perspectives of My Son, Quilt, 64" x 49" x 0"



CBRE

**Management Office
Suite 4040**

Kurt Sarchet
General Manager

Diane Murray
Real Estate Manager

Carol Dowling
Property Accountant

Kelleigh Girmus
Tenant Services Coordinator

Building Engineering Staff

Troy Taylor
Chief Engineer

Bud Blanchard
Assistant Chief Engineer

Steve Sinn
Lead Engineer

Tom Cyr
Joshua Rice
Tom Barnes
Matt Dixon
Patrick Rico

Janitorial Daycrew

Bryan Reichert
Deborah Wright
Nestor Gutama
Tenagne Teka
Mesgina Haile

IMPARK PARKING

Jeremiah Dineen
Garage Manager
206-628-9042

Building Management Update

2016 SMT Projects and Improvements

❖ Common area carpet replacement on Levels 3, 4, 6 and 40 is still being scheduled for late Summer/early Fall.

❖ The first phase of the SMT Building Envelope Improvements Project began in August 2015 and will continue through the end of June 2016. Workers are using the rooftop BMU (Building Maintenance Unit – the equipment used for washing exterior windows) to remove and replace sealants on the exterior walls above the parking garage roof and on the southeast side of the building between Levels 16 and 57. Additional exterior portions will be completed in subsequent phases.

❖ The Level 12/14 Structural Improvements Project began in May and will continue until approximately September 2016. On parking level 12, the project has taken up 19 reserved stalls until mid-July. Parking was relocated to garage levels lower down, so parking will be at more of a premium while this first phase of the project is underway.



SMT – 2016 Golden Dumpster Award

In April 2016, Seattle Municipal Tower was awarded the 2016 Golden Dumpster Award in the larger office building category in the City of Seattle.

Recology CleanScapes, Seattle Public Utilities, and BOMA Seattle/King County co-sponsor the Golden Dumpster Award annually, with three participating categories of commercial buildings based on size. This award recognizes properties that have made significant achievements in the areas of waste reduction, recycling and composting.

In March 2016, participants were required to complete a detailed application outlining waste reduction and best practices at their respective properties. Each competing property was then toured by representatives from Recology CleanScapes for an on-site review of waste management facilities and procedures.

Elizabeth Zorad, Waste Zero Specialist with Recology CleanScapes noted in the announcement of SMT as a winning property: "Your commitment to waste reduction and resource conservation is excellent and we only hope that you continue on the path towards zero waste."

**THE
GOLDEN
DUMPSTER
AWARDS**



Seattle Municipal Tower Building Retail

Treasures Gifts &
Snacks
682-9422

Starbucks
622-5789

Core Bistro
829-9050

Chew Chews
223-0821

Bebas & Amigo's
622-7085

Serina M Salon
652-9920

Impark Parking
628-9042

Conference Room Rules and Regulations – A Friendly Reminder

Please take a moment to review a few of the more important Rules and Regulations currently in place for Building Conference Rooms on Floors 40 and 16. Respecting and following these rules helps ensure safe and enjoyable use of these rooms by all tenants.

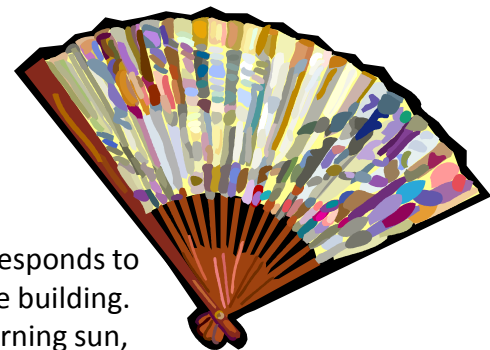
- ❖ User shall ensure that the room's posted capacity is not exceeded for fire code compliance. (The seating and standing capacities are posted in each room and also listed on the building's Axis Portal website.)
- ❖ All chairs must remain inside the room and additional chairs cannot be added per fire code compliance.
- ❖ Noise level shall at all times be appropriate for a business conference center, i.e., no loud music or loud noises. (There are several tenants on Floors 40 and 16 whose business operations can be disrupted by loud music or other noise including talking outside conference rooms, etc.)
- ❖ No flyers or signs may be posted in the common area lobbies outside the conference rooms.
- ❖ No open flames, including candles or sterno burners, are allowed at any time. **(Also, please note that electrical appliances such as hot plates, crock pots, etc. can trip the breakers in these rooms, since the electrical circuits in these rooms are not designed to accommodate cooking appliances.)**
- ❖ Any fundraising events that include sale of food must comply with Seattle Municipal Code 10.10 pertaining to food handling and distribution.
- ❖ Conference Rooms 1600 and 1610 are for business use only. All parties need to be booked for the 40th Floor Conference Rooms only. (This is due to the dentist office located directly adjacent to Rooms 1600 and 1610.)

All conference room use shall be scheduled through www.seattlemunicipaltower.com. Please call Kelleigh Girmus in building management for questions at 206-624-7005.

A complete list of Conference Room Rules and Regulations is posted on the SMT Portal website, www.seattlemunicipaltower.com

Tip for Keeping Cool

During the summer months, our engineering staff responds to many tenant calls regarding hot temperatures in the building. Please help us help you. If your office faces the morning sun, simply close the blinds before leaving each day and keep them closed throughout the morning hours. The heat load produced by the sun will be significantly reduced as a result of this simple step.





2016 1st Quarter Results for Work Order Requests

	Total Requests	Average Response Time
Average Response Time – Light Out	206	3 hours 18 minutes
Average Response Time – Misc. Engineering Requests	181	4 hours 37 minutes
Average Response Time – HVAC cold	17	3 hours 02 minutes
Average Response Time - Plumbing	95	2 hours 59 minutes

Please note: Work orders for HVAC requests are responded to as soon as they are received, but work orders are sometimes not closed out immediately, so there may be an interval of 1-2 hours between the opening and closing of the work order.

Seattle Municipal Tower Green Facts

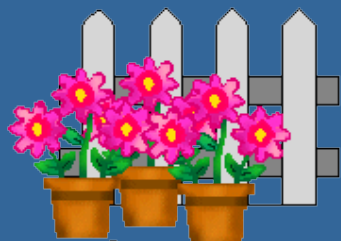
YTD 2016 Compost and Recycling at SMT

Tenants and staff worked together to successfully divert the following volumes of food waste, recyclable materials, and hazardous waste from the landfill:

- 480 pounds of batteries recycled
- 109,560 pounds of food waste composted
- 100,210 pounds of mixed paper recycled
- 27,105 pounds of cardboard recycled



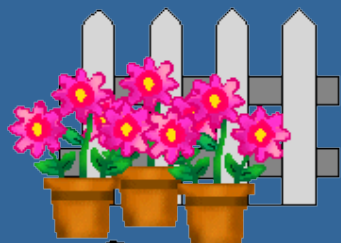
Metal, glass and plastic recycling volumes are not specifically recorded, but SMT recycles those materials three times weekly through CleanScapes, Inc.



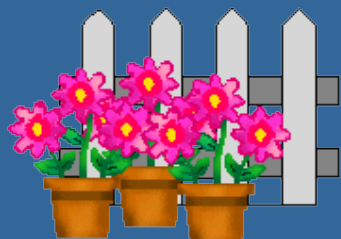
Summer



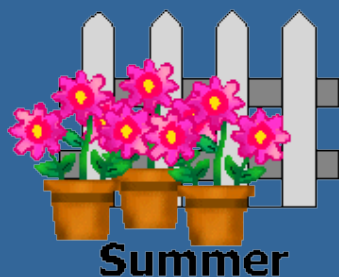
Summer



Summer



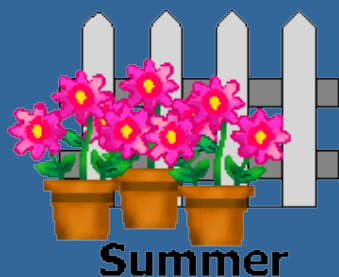
Summer



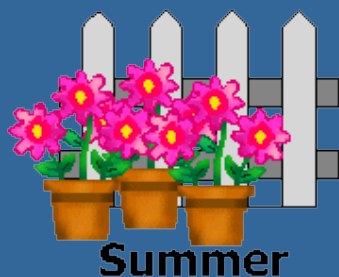
Summer



Summer



Summer



Summer

Bike Parking at SMT

Please follow a few simple tips to provide a pleasant parking experience for all in the Seattle Municipal Tower garage:

- ❖ Remember to **LOCK** your bike and remove all valuables **(even when you are using one of the City's locked bike cages)**
- ❖ Please leave your lock on the designated lock-bar when not in use.
- ❖ Exit the garage in the direction of vehicle travel.
- ❖ City employees can visit [My Trips](#) for more bike commuting tips and resources.



Helpful Hints— Tips From Security

Vacation Security

With summer here and vacations in our plans, all know that an empty house is a tempting target for a burglar. Keeping your house and belongings safe should be a priority for all.

- Ask a neighbor to keep watch on your home and to pick up mail and papers.
- Never leave your house key hidden outside your house.
- Plug in timers for your lights, radio, TV...give the appearance that someone is home.
- Never announce your absence on an answering machine message.
- Call your local police to let them know you'll be gone. A lot of police agencies have a "check the house" program.
- Ask a neighbor to park a car in your driveway.
- Make sure your garage and "out buildings" are locked.
- Double check all your windows and doors to ensure they are closed and locked.

Coming home and finding your home burglarized is not the way to end your vacation! Be proactive and decrease your chances of being a victim!

RECOVERY ROOM POLICY

Recovery Room 4038 (which is located down the hallway adjacent to Building Management 4040) is provided for use by all tenants in the building. We would like to remind all tenants of the following rules when using this room.

- Permitted use only by City of Seattle Employees (**with proper ID**)
- Key checkout is required with ID at Suite 4040
- 30-minute time limit
- Room is available on a first come - first serve basis
- Only for temporary rest or recovery from headaches, stomach aches, illness, etc.
- One person at a time in room
- Please remove disposable pillow case after each use



If you have any questions about the Recovery Room, please feel free to contact Building Management at 206-624-7005.



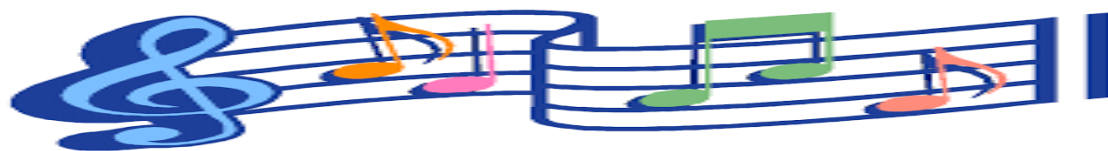
Seattle Municipal Tower Blood Drive

The Seattle Municipal Tower has been a valued partner with Bloodworks Northwest, conducting numerous blood drives annually since 1996. Last year 823 donors registered to give at Seattle Municipal Tower; as a result of your generous donations and commitment to saving lives, Bloodworks Northwest provided support for nearly 2,100 patients in hospitals throughout western Washington. SMT remains the single largest donor community in downtown Seattle, making a difference for literally thousands of families, friends and neighbors year after year.

Seattle Municipal Tower ensures many hundreds of donors have a place to show up, share and be powerful for anyone and everyone who finds themselves in need of blood to make a life-saving, life-changing difference.

The first 2016 drives were held in February and April, with additional drives scheduled for June 14th and 15th, August 9th and 10th, October 11th and 12th, December 13th and 14th and December 28th.





Summer in Seattle – Out to Lunch Concert Series

Pack your lunch and enjoy the show! Noontime concerts are scheduled Tuesday through Friday in parks and other outdoor venues around downtown.

You can find the full lineup and schedule or you can find out more information any time at SummerInSeattle.com or at <http://www.downtownseattle.com/Summer/otl>



SMT Retail Advertisements and Coupons

Core Bistro



700 5th Ave Suite 602
(6th level Plaza SMT)
206-829-9050

50% OFF
VN Style
Iced Coffee

Must present this coupon at time of purchase. Expires: 9/30/2016

