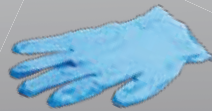


ALMOST NOTHING GOES TO LANDFILL



Para información en español:

需要華語協助, 請致電:

Recology Sunset Scavenger 415.330.1300

Recology Golden Gate 415.626.4000



recologysf.com



SF Environment
Our home. Our city. Our planet.
A Department of the City and County of San Francisco.

PUT THESE MATERIALS IN YOUR BLACK LANDFILL BIN

These items go in your Black Landfill Bin because there are currently no recycling options in San Francisco

- Ceramic dishware or glassware
- Diapers
- Feminine products
- Foil-backed or plastic-backed paper
- Glass (other than bottles and jars)
- Juice or soy milk type boxes with foil or plastic liner
- Kitty litter and animal feces (bagged)
- Light bulbs — Incandescent only, no mercury-containing bulbs ie: fluorescent or HID
- Plastic items mixed with metal, fabric or rubber
- Plastic labeled “Biodegradable” because it can not be composted
- Rubber or latex gloves or rubber bands
- Plywood, pressboard, and painted, stained or treated wood

These items may be put in your Black Landfill Bin, but you can find recycling options for them

- Cooking grease — call SF Greasecycle, 415.695.7312, for drop-off locations or collection options
- Hangers — take back to a garment cleaner for reuse
- Pens and pencils — [SFindvironment.org/reuse](https://www.sfindvironment.org/reuse)
- Plastic bags — recycle clean, dry plastic bags at all California supermarkets
- Shoes — all shoes can be re-used or recycled. Check our ecofinder for options. For more information go to [SFindvironment.org/ecofinder](https://www.sfindvironment.org/ecofinder).
- Styrofoam — take packing peanuts to your local shipping store for reuse, or find recycling options at [SFindvironment.org/ecofinder](https://www.sfindvironment.org/ecofinder) or call 415.330.1300

PLEASE **DO NOT** PLACE THESE MATERIALS INTO YOUR BLACK BIN!

They are against city ordinance or state law to place in the landfill

- Food, dirty or waxy paper, waxy cardboard, or plants (Compostables) — [Green Compost Bin](#)
- Plastic labeled “Compostable” — [Green Compost Bin](#)
- Recyclable clean paper / cardboard, glass, metal or plastic — [Blue Recycle Bin](#)

Find recycling options for these toxic items at [SFindvironment.org/ecofinder](https://www.sfindvironment.org/ecofinder) or call 415.330.1300

- Appliances
- Asbestos
- Batteries — small residential quantities can be recycled at many SF pharmacies/hardware stores
- Construction debris — [SFindvironment.org/c&d](https://www.sfindvironment.org/c&d)
- Electronics
- Household hazardous waste or chemicals
- Large items (furniture, metal, plastic, wood, etc.)
- Light bulbs containing mercury (Fluorescent/HID)
- Motor oil
- Needles or syringes
- Paint
- Toys with electronics or batteries